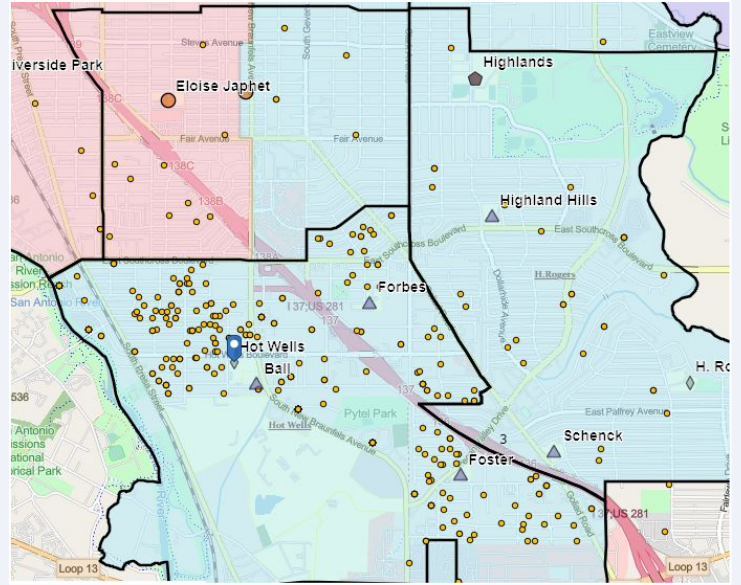


Hot Wells Middle School

SCHOOL OVERVIEW

Location:	400 Hot Wells Blvd San Antonio, TX 78223
Grades:	6-8
Enrollment:	419
Poverty Index:	65%
Trustee/SMD:	Ozuna - District 3
HS Feeder Pattern:	Highlands
Recommendation:	<ul style="list-style-type: none"> Receive students in grades 06-08 from a redesigned Japhet Academy to make fuller use of a neighborhood comprehensive middle school.

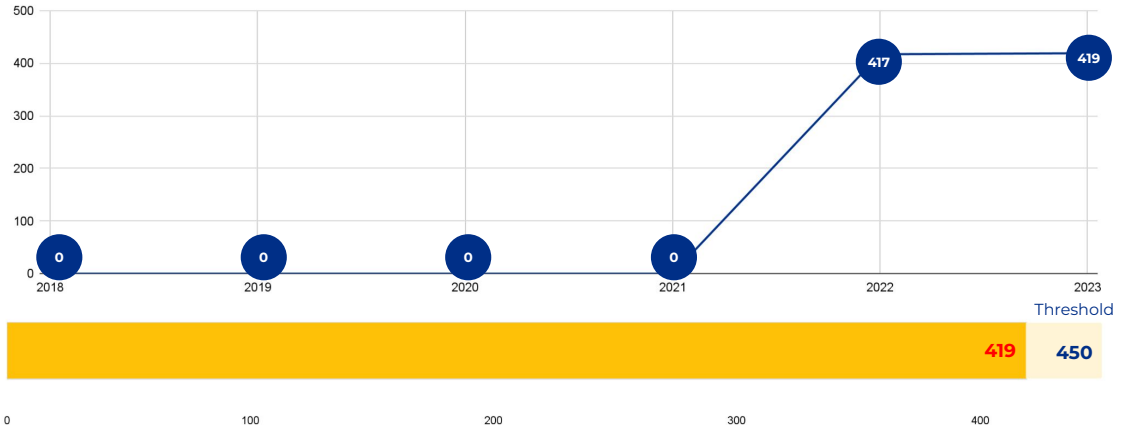


PRIMARY CRITERIA #1: 2022-23 ENROLLMENT

2023 Enrollment
419

Campus Type
MS

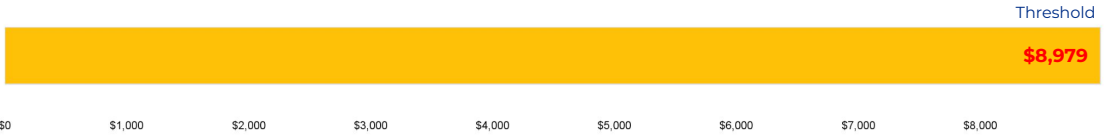
Enrollment Threshold
450



	2018	2019	2020	2021	2022	2023
Total Enrollment:	0	0	0	0	417	419

PRIMARY CRITERIA #2: FACILITY COST PER PUPIL

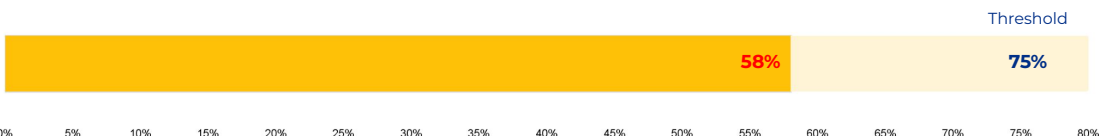
Cost Per Pupil
\$8,979



PRIMARY CRITERIA #3: 2022-23 FACILITY USE

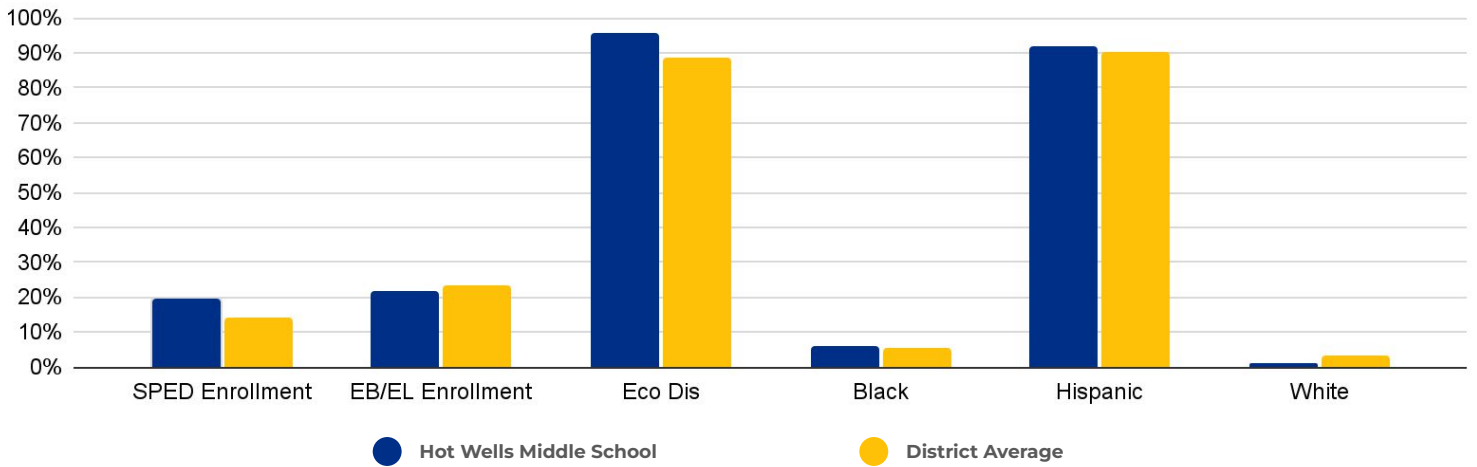
Functional Capacity
717

Facility Usage
58%

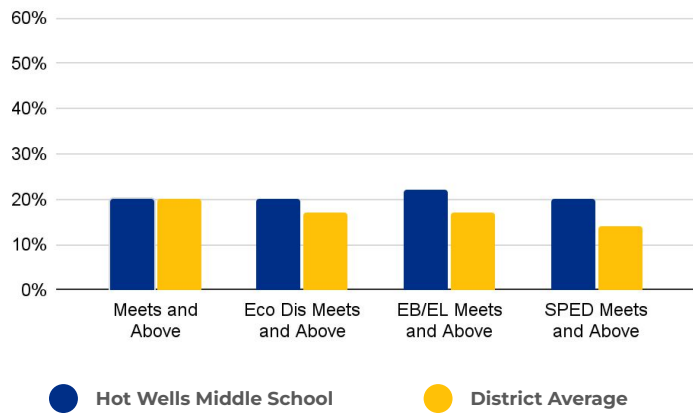


Hot Wells Middle School

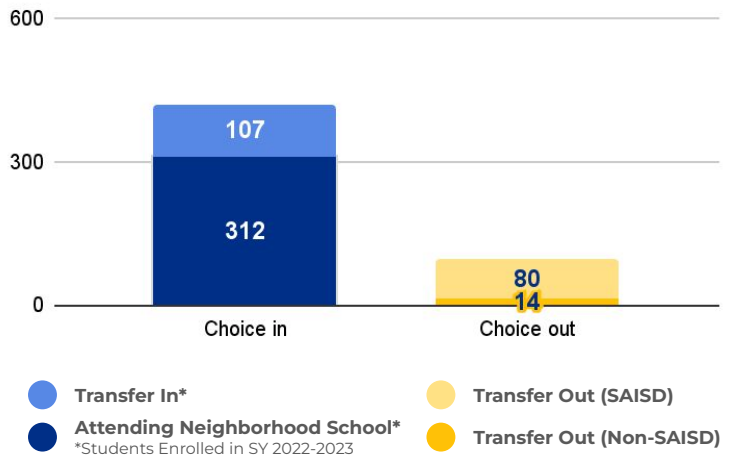
DEMOGRAPHICS



2022 ACADEMIC PERFORMANCE



2022-23 CHOICE IN / CHOICE OUT



BRIEF CRITERIA ANALYSIS

Hot Wells meets all three primary criteria, but has significantly more families choosing into the school than choosing out. By adding students from Japhet's 6-8 grades, Hot Wells will become a well-enrolled comprehensive middle school. As a result, it is projected that in 2024 there will be 669 students at Hot Wells.

BENEFITS OF RIGHTSIZING

Rightsizing will lead to increased enrollment and additional resources. How those resources are used will be decided by the school's principal, staff and Campus Advisory Council. Rightsizing decisions will lead to early childhood services in every elementary school, fewer split grade levels or teaching assignments, more courses or full-time specialty teachers (art, music, AVID, etc), increased staff collaboration, additional student services (mental health, social work, academic intervention, etc), more robust dual language programs, greater access to extracurriculars, and increases to campus budgets for positions like library services, Family and Community Engagement Specialists, and instructional coaches.

With Hot Wells receiving students from Japhet Academy, more students and families will gain access to:

- More robust and sustainable dual language and ESL program services for students new to the U.S. and to students progressing from elementary dual language programs to secondary dual language programs;
- Middle school athletic programs;
- Dance and mariachi programming in addition to existing visual art, band, and orchestra; and
- Additional full time teachers.